

MAIN FEATURES

ACTIVE SECURITY

- **NUMBER OF KEY-DIFFERS:** over 3,600.

PASSIVE SECURITY

- **Push resistance:** projecting cam.
- **Drill resistance:**
 - hardened steel inserts into both sides of the cylinder body
 - hardened steel pin and driver in first position.
- **Picking resistance:**
 - paracentral key way
 - special mushroom-type drivers.

KEY ARRANGEMENTS CAPACITY

- 1,000 different cylinders per MK key (excluding the integrated key sections capacity).
- Other configurations are available on request.

RELIABILITY

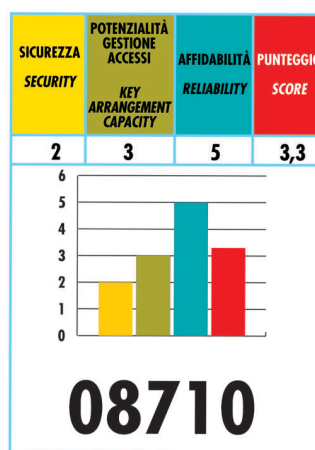
- 100,000 cycles

NORMS

- Compliant with EN 1303 norm
 - Durability: grade 6 (100.000 cycles)
 - Security: grade 2

CERTIFICATIONS

- SKG** (special version)



Technical features:

CYLINDER:

- 5 pins key biting system (4 pins for short size)
- brass body
- brass plugs
- self-lubricating sintered steel projecting DIN cam
- pins:
 - in wear resistant bronze
 - in hardened steel in first position
- drivers:
 - in brass, cylindrical and mushroom-like for antipicking function
 - in hardened steel in first position
- phosphor bronze springs

KEY:

- in brass nickel plated
- 2,4 mm thickness
- 0,65 mm depth

Finishes:

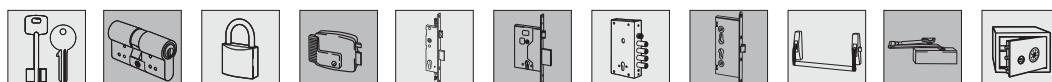
- Standard: sanded brass (fin. 00)
- On request: nickel plated brass (fin. 12), polished brass (fin. 66)

On request:

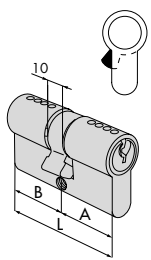
- KA, MK, GMK, GGMK, CE, CA, C5, PP and relevant models

Supplied as standard:

- fixing screw
- 3 keys:
 - art. 1.01310.10.1 (5 pins)
 - or art. 1.01320.10.1 (4 pins)

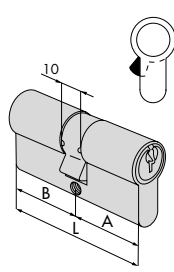


Type	Description	Key item				Unitweight	Pieces	ITEM			
		L	A	B	Pins			Type	Dim.	Hand	Fin.



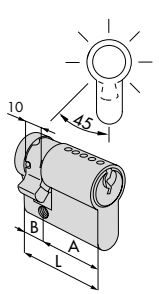
• Double cylinder

25 / 25	49,8	24,9	24,9	4	1 01320 10 1	0,192	12	1	08710 04 0
27 / 27	53,0	26,5	26,5	4	1 01320 10 1	0,202	12	1	08710 05 0
27 / 33	59,0	26,5	32,5	4	1 01320 10 1	0,220	12	1	08710 06 0
30 / 30	59,0	29,5	29,5	5	1 01310 10 1	0,220	12	1	08710 07 0
30 / 33	62,0	29,5	32,5	5	1 01310 10 1	0,227	12	1	08710 08 0
27 / 37	63,0	26,5	36,5	4	1 01320 10 1	0,234	12	1	08710 09 0
30 / 35	64,0	29,5	34,5	5	1 01310 10 1	0,238	12	1	08710 26 0
33 / 33	65,0	32,5	32,5	5	1 01310 10 1	0,237	12	1	08710 10 0
27 / 43	69,0	26,5	42,5	4	1 01320 10 1	0,247	12	1	08710 11 0
30 / 40	69,0	29,5	39,5	5	1 01310 10 1	0,249	12	1	08710 12 0
35 / 35	69,0	34,5	34,5	5	1 01310 10 1	0,250	12	1	08710 13 0
30 / 43	72,0	29,5	42,5	5	1 01310 10 1	0,260	6	1	08710 14 0
37 / 37	73,0	36,5	36,5	5	1 01310 10 1	0,264	6	1	08710 15 0
30 / 45	74,0	29,5	44,5	5	1 01310 10 1	0,275	6	1	08710 27 0
35 / 40	74,0	34,5	39,5	5	1 01310 10 1	0,275	6	1	08710 28 0
27 / 53	79,0	26,5	52,5	4	1 01320 10 1	0,281	6	1	08710 16 0
30 / 50	79,0	29,5	49,5	5	1 01310 10 1	0,290	6	1	08710 17 0
35 / 45	79,0	34,5	44,5	5	1 01310 10 1	0,290	6	1	08710 19 0
40 / 40	79,0	39,5	39,5	5	1 01310 10 1	0,290	6	1	08710 18 0
40 / 45	84,0	39,5	44,5	5	1 01310 10 1	0,303	6	1	08710 30 0
43 / 43	85,0	42,5	42,5	5	1 01310 10 1	0,303	6	1	08710 46 0
30 / 60	89,0	29,5	59,5	5	1 01310 10 1	0,316	6	1	08710 20 0
40 / 50	89,0	39,5	49,5	5	1 01310 10 1	0,317	6	1	08710 21 0
45 / 45	89,0	44,5	44,5	5	1 01310 10 1	0,317	6	1	08710 29 0
30 / 70	99,0	29,5	69,5	5	1 01310 10 1	0,345	6	1	08710 24 0
35 / 65	99,0	34,5	64,5	5	1 01310 10 1	0,345	6	1	08710 22 0
40 / 60	99,0	39,5	59,5	5	1 01310 10 1	0,345	6	1	08710 25 0
50 / 50	99,0	49,5	49,5	5	1 01310 10 1	0,345	6	1	08710 23 0
30 / 80	109,0	29,5	79,5	5	1 01310 10 1	0,375	6	1	08710 37 0
40 / 70	109,0	39,5	69,5	5	1 01310 10 1	0,375	6	1	08710 35 0
50 / 60	109,0	49,5	59,5	5	1 01310 10 1	0,375	6	1	08710 36 0



• Double cylinder clutching system

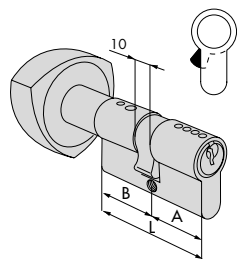
27 / 27	54,0	27,0	27,0	4	1 01320 10 1	0,203	12	1	08714 05 0
27 / 33	59,5	27,0	32,5	4	1 01320 10 1	0,222	12	1	08714 06 0
31 / 31	61,6	30,8	30,8	5	1 01310 10 1	0,222	12	1	08714 07 0
31 / 35	65,3	30,8	34,5	5	1 01310 10 1	0,238	12	1	08714 26 0
27 / 43	69,5	27,0	42,5	4	1 01320 10 1	0,258	12	1	08714 11 0



• Half cylinder adjustable cam in 8 position

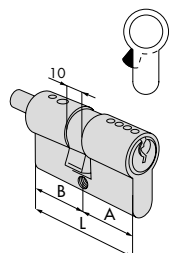
30 / 10	39,5	29,5	10,0	5	1 01310 10 1	0,184	12	1	08730 02 0
33 / 10	42,5	32,5	10,0	5	1 01310 10 1	0,169	12	1	08730 09 0
35 / 10	44,5	34,5	10,0	5	1 01310 10 1	0,175	12	1	08730 07 0
37 / 10	46,5	36,5	10,0	5	1 01310 10 1	0,182	12	1	08730 10 0
40 / 10	49,5	39,5	10,0	5	1 01310 10 1	0,191	12	1	08730 03 0
43 / 10	52,5	42,5	10,0	5	1 01310 10 1	0,200	12	1	08730 11 0
50 / 10	59,5	49,5	10,0	5	1 01310 10 1	0,220	12	1	08730 04 0

Type	Description	Key item				Unitweight	Pieces	ITEM			
		L	A	B	Pins			Type	Dim.	Hand	Fin.



• Double cylinder light bronze anodized aluminium knob

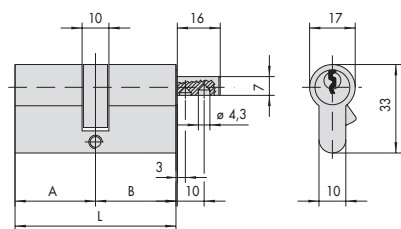
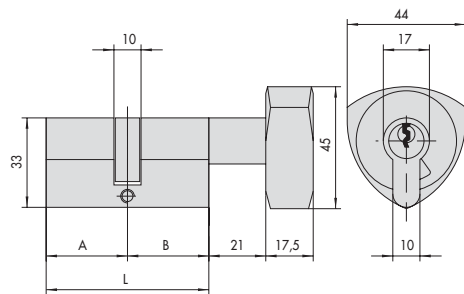
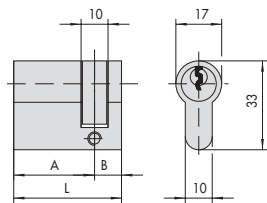
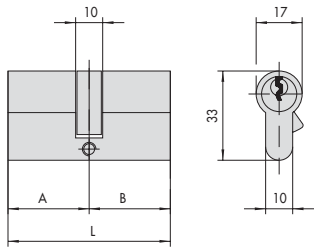
27 / 27	54,0	27,0	27,0	4	1 01320 10 1	0,305	6	1	08728 02 0
31 / 23	54,0	30,8	23,2	5	1 01310 10 1	0,318	6	1	08728 03 0
27 / 33	59,5	27,0	32,5	4	1 01320 10 1	0,322	6	1	08728 24 0
33 / 27	59,5	32,5	27,0	5	1 01310 10 1	0,322	6	1	08728 05 0
31 / 31	61,6	30,8	30,8	5	1 01310 10 1	0,322	6	1	08728 04 0
31 / 33	63,3	30,8	32,5	5	1 01310 10 1	0,333	6	1	08728 07 0
33 / 31	63,3	32,5	30,8	5	1 01310 10 1	0,333	6	1	08728 06 0
31 / 37	67,1	30,8	36,3	5	1 01310 10 1	0,338	6	1	08728 09 0
37 / 31	67,1	36,3	30,8	5	1 01310 10 1	0,338	6	1	08728 10 0
31 / 43	73,3	30,8	42,5	5	1 01310 10 1	0,355	6	1	08728 11 0
43 / 31	73,3	42,5	30,8	5	1 01310 10 1	0,355	6	1	08728 12 0
31 / 50	80,8	30,8	50,0	5	1 01310 10 1	0,372	6	1	08728 26 0
36 / 46	82,1	36,3	45,8	5	1 01310 10 1	0,380	6	1	08728 19 0
33 / 50	82,5	32,5	50,0	5	1 01310 10 1	0,385	6	1	08728 29 0
43 / 43	85,0	42,5	42,5	5	1 01310 10 1	0,392	6	1	08728 25 0
43 / 46	88,3	42,5	45,8	5	1 01310 10 1	0,397	6	1	08728 21 0
46 / 43	88,3	45,8	42,5	5	1 01310 10 1	0,397	6	1	08728 22 0
31 / 60	90,8	30,8	60,0	5	1 01310 10 1	0,413	6	1	08728 27 0
31 / 80	110,8	30,8	80,0	5	1 01310 10 1	0,417	6	1	08728 13 0
27 / 85	112,0	27,0	85,0	4	1 01320 10 1	0,467	6	1	08728 28 0



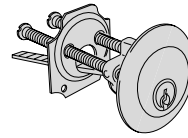
• Double cylinder with thumb turn shaft
 • ON REQUEST:
 Knob
 -art. 1.06353.00
 -art. 1.06354.00

27 / 27	54,0	27,0	27,0	4	1 01320 10 1	0,217	6	1	08753 02 0
31 / 23	54,0	30,8	23,2	5	1 01310 10 1	0,230	6	1	08753 03 0
27 / 33	59,5	27,0	32,5	4	1 01320 10 1	0,237	6	1	08753 24 0
33 / 27	59,5	32,5	27,0	5	1 01310 10 1	0,237	6	1	08753 05 0
31 / 31	61,6	30,8	30,8	5	1 01310 10 1	0,237	6	1	08753 04 0
31 / 33	63,3	30,8	32,5	5	1 01310 10 1	0,247	6	1	08753 07 0
33 / 31	63,3	32,5	30,8	5	1 01310 10 1	0,247	6	1	08753 06 0
33 / 33	65,0	32,5	32,5	5	1 01310 10 1	0,250	6	1	08753 34 0
43 / 23	65,7	42,5	23,2	5	1 01310 10 1	0,250	6	1	08753 41 0
31 / 36	67,1	30,8	36,3	5	1 01310 10 1	0,267	6	1	08753 09 0
36 / 31	67,1	36,3	30,8	5	1 01310 10 1	0,267	6	1	08753 10 0
35 / 35	69,0	34,5	34,5	5	1 01310 10 1	0,275	6	1	08753 14 0
36 / 36	72,6	36,3	36,3	5	1 01310 10 1	0,280	6	1	08753 18 0
31 / 43	73,3	30,8	42,5	5	1 01310 10 1	0,283	6	1	08753 11 0
43 / 31	73,3	42,5	30,8	5	1 01310 10 1	0,283	6	1	08753 12 0
43 / 36	78,2	42,5	36,3	5	1 01310 10 1	0,280	6	1	08753 17 0
31 / 50	80,8	30,8	50,0	5	1 01310 10 1	0,300	6	1	08753 26 0
36 / 47	82,1	36,3	46,8	5	1 01310 10 1	0,308	6	1	08753 19 0
47 / 36	82,1	46,8	36,3	5	1 01310 10 1	0,308	6	1	08753 33 0
33 / 50	82,5	32,5	50,0	5	1 01310 10 1	0,317	6	1	08753 29 0
43 / 43	85,0	42,5	42,5	5	1 01310 10 1	0,325	6	1	08753 25 0
43 / 46	88,3	42,5	45,8	5	1 01310 10 1	0,333	6	1	08753 21 0
46 / 43	88,3	45,8	42,5	5	1 01310 10 1	0,333	6	1	08753 22 0
31 / 60	90,8	30,8	60,0	5	1 01310 10 1	0,342	6	1	08753 27 0
68 / 23	91,2	68,0	23,2	5	1 01310 10 1	0,350	6	1	08753 42 0
46 / 46	91,6	45,8	45,8	5	1 01310 10 1	0,350	6	1	08753 38 0
60 / 36	96,3	60,0	36,3	5	1 01310 10 1	0,360	6	1	08753 37 0
45 / 55	99,0	44,5	54,5	5	1 01310 10 1	0,370	6	1	08753 31 0
55 / 45	99,0	54,5	44,5	5	1 01310 10 1	0,370	6	1	08753 35 0
60 / 46	105,0	60,0	45,8	5	1 01310 10 1	0,385	6	1	08753 40 0
60 / 50	110,0	60,0	50,0	5	1 01310 10 1	0,400	6	1	08753 39 0
31 / 80	110,8	30,8	80,0	5	1 01310 10 1	0,400	6	1	08753 13 0
27 / 85	112,0	27,0	85,0	4	1 01320 10 1	0,408	6	1	08753 28 0
55 / 65	119,0	54,5	64,5	5	1 01310 10 1	0,430	6	1	08753 32 0
65 / 55	119,0	64,5	54,5	5	1 01310 10 1	0,430	6	1	08753 36 0

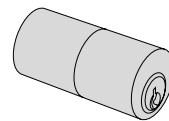
Dimensional drawings



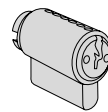
Other available model



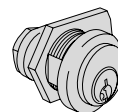
1.02513.00.0



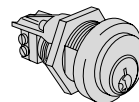
1.02592.10.0
1.02592.50.0
1.02592.60.0
1.02592.70.0
1.02692.80.0
1.02592.90.0



1.02649.01.0
1.02650.01.0



1.72255.26.0



1.72256.01.0
1.72256.03.0