

TSP EUROPEAN PROFILE CYLINDERS



MAIN FEATURES

ACTIVE SECURITY

- **PATENTED SYSTEM**
- **SECURITY CARD:** for the authorised duplication system. Keys can only be duplicated by CISA or its Authorised Centres on presentation of the Security Card.
- **NUMBER OF KEY-BITTINGS:** over 7,000,000.

PASSIVE SECURITY

- **Push:** projecting cam.
- **Drill resistance:**
 - 2 hardened steel inserts into both sides of the cylinder body
 - 2 hardened steel inserts into both plugs
 - hardened steel pin and driver in first position.
- **Picking resistance:**
 - specially designed key way
 - active pins, patented system
 - dead-locking pin
 - special mushroom-type drivers
- **Tearing resistance:** ring nut which unites the plugs and cam, making them into one, solid component.

KEY ARRANGEMENTS CAPACITY

- 300 different cylinders per MK key with dead-locking pin
- 2000 different cylinders per MK key, no dead-locking pin (excluding passive pins capacity in both cases).

RELIABILITY

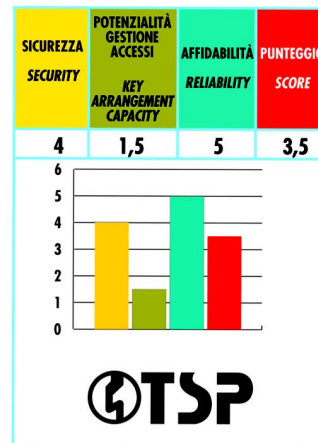
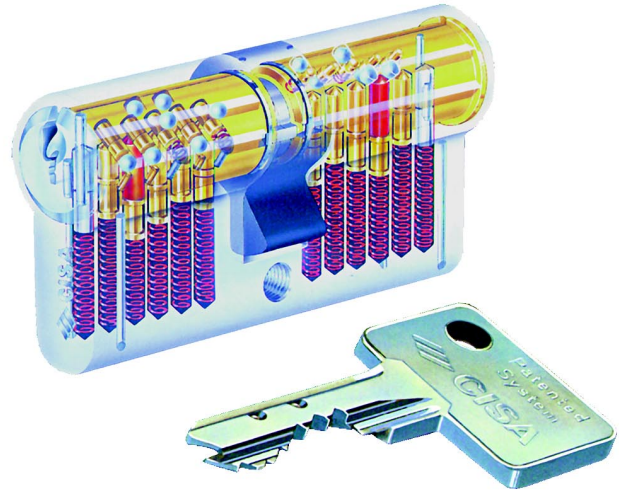
- 100,000 cycles (compliant EN 1303 – Durability Grade 6)

CERTIFICATIONS

- Manufactured in conformity with:
 - EN 1303 standards: grade 6 Durability, grade 3 Security
 - DIN 18254 standards, grade 3 (ref. DIN EN 1303)
 - SKG ** (special version)

PATENTS

- EEC patent No. 0 166 945 B1 – 0 161 654 B1
- USA patent No. 4.683.740 – 5.050.412



Technical features:

CYLINDER:

- 6 pins key biting system
- brass body
- brass plugs
- self-lubricating sintered steel projecting DIN cam
- pins:
 - in wear resistant bronze
 - in hardened steel in first position
 - side stainless steel balls
- drivers:
 - in brass, cylindrical and mushroom-like for an anti-picking function
 - in hardened steel in first position
- phosphor bronze springs

KEY:

- in nickel silver alloy
- numbered on key head
- 3,2 mm thickness
- 0,5 mm depth

Finishes:

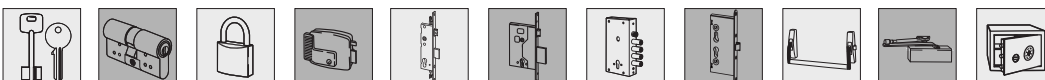
- Standard: nickel-plated sand brass (fin. 12)
- On request: polished brass (fin. 66)

On request:

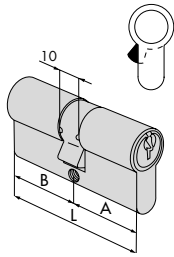
- KA, MK, CE, CA, C5, CL (Key with plastic head), PP and relevant models

Supplied as standard:

- fixing screw
- user and maintenance instructions
- 3 keys art 1.00500.01.0
- SECURITY CARD

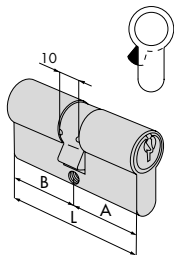


Type	Description	Key item				Kg	Unitweight	Pieces	ITEM			
		L	A	B	Pins				Type	Dim.	Hand	Fin.



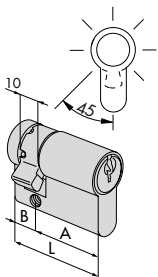
• Double cylinder

28 / 28	55,4	27,7	27,7	5	1 00500 00 1	0,252	1	1	08810 05 0 12
30 / 30	59,0	29,5	29,5	6	1 00500 00 1	0,263	1	1	08810 07 0 12
28 / 34	61,2	27,7	33,5	5	1 00500 00 1	0,267	1	1	08810 06 0 12
30 / 33	62,0	29,5	32,5	6	1 00500 00 1	0,240	1	1	08810 08 0 12
28 / 36	63,2	27,7	35,5	5	1 00500 00 1	0,276	1	1	08810 09 0 12
30 / 35	64,0	29,5	34,5	6	1 00500 00 1	0,279	1	1	08810 26 0 12
33 / 33	65,0	32,5	32,5	6	1 00500 00 1	0,282	1	1	08810 10 0 12
30 / 40	69,0	29,5	39,5	6	1 00500 00 1	0,295	1	1	08810 12 0 12
35 / 35	69,0	34,5	34,5	6	1 00500 00 1	0,295	1	1	08810 13 0 12
28 / 42	69,2	27,7	41,5	5	1 00500 00 1	0,295	1	1	08810 11 0 12
30 / 43	72,0	29,5	42,5	6	1 00500 00 1	0,304	1	1	08810 14 0 12
37 / 37	73,0	36,5	36,5	6	1 00500 00 1	0,304	1	1	08810 15 0 12
30 / 45	74,0	29,5	44,5	6	1 00500 00 1	0,310	1	1	08810 27 0 12
35 / 40	74,0	34,5	39,5	6	1 00500 00 1	0,310	1	1	08810 28 0 12
30 / 50	79,0	29,5	49,5	6	1 00500 00 1	0,326	1	1	08810 17 0 12
35 / 45	79,0	34,5	44,5	6	1 00500 00 1	0,326	1	1	08810 19 0 12
40 / 40	79,0	39,5	39,5	6	1 00500 00 1	0,326	1	1	08810 18 0 12
28 / 54	81,2	27,7	53,5	5	1 00500 00 1	0,333	1	1	08810 16 0 12
40 / 45	84,0	39,5	44,5	6	1 00500 00 1	0,342	1	1	08810 30 0 12
43 / 43	85,0	42,5	42,5	6	1 00500 00 1	0,303	1	1	08810 46 0 12
30 / 60	89,0	29,5	59,5	6	1 00500 00 1	0,358	1	1	08810 20 0 12
40 / 50	89,0	39,5	49,5	6	1 00500 00 1	0,358	1	1	08810 21 0 12
45 / 45	89,0	44,5	44,5	6	1 00500 00 1	0,358	1	1	08810 29 0 12
40 / 55	94,0	39,5	54,5	6	1 00500 00 1	0,374	1	1	08810 42 0 12
30 / 70	99,0	29,5	69,5	6	1 00500 00 1	0,389	1	1	08810 24 0 12
35 / 65	99,0	34,5	64,5	6	1 00500 00 1	0,389	1	1	08810 22 0 12
40 / 60	99,0	39,5	59,5	6	1 00500 00 1	0,389	1	1	08810 25 0 12
50 / 50	99,0	49,5	49,5	6	1 00500 00 1	0,389	1	1	08810 23 0 12
30 / 80	109,0	29,5	79,5	6	1 00500 00 1	0,421	1	1	08810 37 0 12
40 / 70	109,0	39,5	69,5	6	1 00500 00 1	0,421	1	1	08810 35 0 12
50 / 60	109,0	49,5	59,5	6	1 00500 00 1	0,421	1	1	08810 36 0 12
40 / 80	119,0	39,5	79,5	6	1 00500 00 1	0,453	1	1	08810 60 0 12



• Double cylinder clutching system

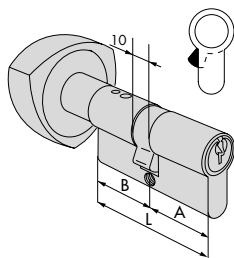
31 / 31	61,6	30,8	30,8	6	1 00500 00 1	0,263	1	1	08870 07 0 12
31 / 35	65,3	30,8	34,5	6	1 00500 00 1	0,279	1	1	08870 26 0 12



• Half cylinder adjustable cam in 8 position

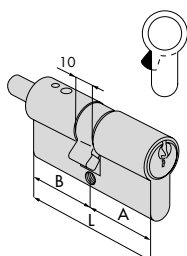
30 / 10	39,5	29,5	10,0	6	1 00500 00 1	0,212	1	1	08830 02 0 12
33 / 10	42,5	32,5	10,0	6	1 00500 00 1	0,120	1	1	08830 09 0 12
35 / 10	44,5	34,5	10,0	6	1 00500 00 1	0,228	1	1	08830 07 0 12
37 / 10	46,5	36,5	10,0	6	1 00500 00 1	0,120	1	1	08830 10 0 12
40 / 10	49,5	39,5	10,0	6	1 00500 00 1	0,244	1	1	08830 03 0 12
43 / 10	52,5	42,5	10,0	6	1 00500 00 1	0,120	1	1	08830 11 0 12
50 / 10	59,5	49,5	10,0	6	1 00500 00 1	0,275	1	1	08830 04 0 12

Type	Description	Key item				Kg	Pcs	ITEM			
		L	A	B	Pins			Type	Dim.	Hand	Fin.



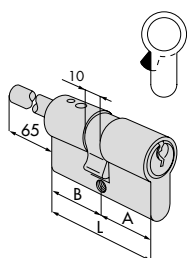
- Double cylinder light bronze anodized aluminium knob

31 / 23	54,0	30,8	23,2	6	1 00500 00 1	0,350	1	1	08850	03	0	12
33 / 27	59,5	32,5	27,0	6	1 00500 00 1	0,350	1	1	08850	05	0	12
31 / 31	61,6	30,8	30,8	6	1 00500 00 1	0,350	1	1	08850	04	0	12
31 / 33	63,3	30,8	32,5	6	1 00500 00 1	0,383	1	1	08850	07	0	12
33 / 31	63,3	32,5	30,8	6	1 00500 00 1	0,383	1	1	08850	06	0	12
31 / 36	67,1	30,8	36,3	6	1 00500 00 1	0,396	1	1	08850	09	0	12
36 / 31	67,1	36,3	30,8	6	1 00500 00 1	0,338	1	1	08850	10	0	12
31 / 43	73,3	30,8	42,5	6	1 00500 00 1	0,355	1	1	08850	11	0	12
43 / 31	73,3	42,5	30,8	6	1 00500 00 1	0,390	1	1	08850	12	0	12
31 / 50	80,8	30,8	50,0	6	1 00500 00 1	0,410	1	1	08850	26	0	12
33 / 50	82,5	32,5	50,0	6	1 00500 00 1	0,420	1	1	08850	29	0	12
43 / 43	85,0	42,5	42,5	6	1 00500 00 1	0,430	1	1	08850	25	0	12
31 / 60	90,8	30,8	60,0	6	1 00500 00 1	0,450	1	1	08850	27	0	12
31 / 80	110,8	30,8	80,0	6	1 00500 00 1	0,460	1	1	08850	13	0	12



- Double cylinder with thumb turn shaft
- ON REQUEST:
Knob
-art. 1.06353.00
-art. 1.06354.00

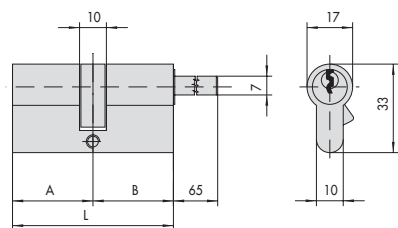
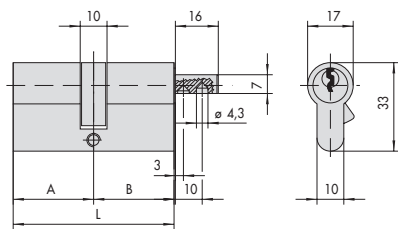
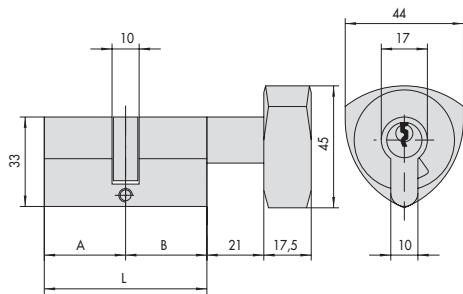
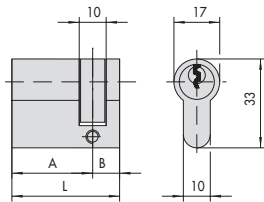
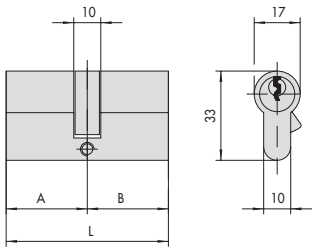
31 / 23	54,0	30,8	23,2	6	1 00500 00 1	0,260	1	1	08851	03	0	12
33 / 27	59,5	32,5	27,0	6	1 00500 00 1	0,260	1	1	08851	05	0	12
31 / 31	61,6	30,8	30,8	6	1 00500 00 1	0,260	1	1	08851	04	0	12
31 / 33	63,3	30,8	32,5	6	1 00500 00 1	0,280	1	1	08851	07	0	12
33 / 31	63,3	32,5	30,8	6	1 00500 00 1	0,280	1	1	08851	06	0	12
33 / 33	65,0	32,5	32,5	6	1 00500 00 1	0,350	1	1	08851	34	0	12
43 / 23	65,7	42,5	23,2	6	1 00500 00 1	0,250	1	1	08851	41	0	12
31 / 36	67,1	30,8	36,3	6	1 00500 00 1	0,290	1	1	08851	09	0	12
36 / 31	67,1	36,3	30,8	6	1 00500 00 1	0,290	1	1	08851	10	0	12
36 / 36	72,6	36,3	36,3	6	1 00500 00 1	0,336	1	1	08851	18	0	12
31 / 43	73,3	30,8	42,5	6	1 00500 00 1	0,320	1	1	08851	11	0	12
43 / 31	73,3	42,5	30,8	6	1 00500 00 1	0,320	1	1	08851	12	0	12
43 / 36	78,8	42,5	36,3	6	1 00500 00 1	0,336	1	1	08851	17	0	12
31 / 50	80,8	30,8	50,0	6	1 00500 00 1	0,340	1	1	08851	26	0	12
46 / 36	82,1	45,8	36,3	6	1 00500 00 1	0,308	1	1	08851	33	0	12
33 / 50	82,5	32,5	50,0	6	1 00500 00 1	0,340	1	1	08851	29	0	12
43 / 43	85,0	42,5	42,5	6	1 00500 00 1	0,350	1	1	08851	25	0	12
31 / 60	90,8	30,8	60,0	6	1 00500 00 1	0,380	1	1	08851	27	0	12
68 / 23	91,2	68,0	23,2	6	1 00500 00 1	0,350	1	1	08851	42	0	12
46 / 46	91,6	45,8	45,8	6	1 00500 00 1	0,350	1	1	08851	38	0	12
60 / 36	96,3	60,0	36,3	6	1 00500 00 1	0,360	1	1	08851	37	0	12
45 / 55	99,0	44,5	54,5	6	1 00500 00 1	0,370	1	1	08851	31	0	12
55 / 45	99,0	54,5	44,5	6	1 00500 00 1	0,410	1	1	08851	35	0	12
60 / 46	105,0	60,0	45,8	6	1 00500 00 1	0,385	1	1	08851	40	0	12
60 / 50	110,0	60,0	50,0	6	1 00500 00 1	0,410	1	1	08851	39	0	12
31 / 80	110,8	30,8	80,0	6	1 00500 00 1	0,430	1	1	08851	13	0	12
55 / 65	119,0	54,5	64,5	6	1 00500 00 1	0,430	1	1	08851	32	0	12
65 / 55	119,0	64,5	54,5	6	1 00500 00 1	0,430	1	1	08851	36	0	12



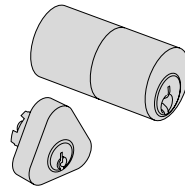
- Double cylinder with adjustable thumb turn shaft
- Can be combined with internal rose art. 1.06458.20
- ON REQUEST:
Knob
-art. 1.06353.00
-art. 1.06354.00

31 / 31	61,6	30,8	30,8	6	1 00500 00 1	0,275	1	1	08881	04	0	12
43 / 31	73,3	42,5	30,8	6	1 00500 00 1	0,320	1	1	08881	12	0	12
50 / 31	80,3	49,5	30,8	6	1 00500 00 1	0,349	1	1	08881	51	0	12
60 / 31	90,3	59,5	30,8	6	1 00500 00 1	0,379	1	1	08881	30	0	12
68 / 31	98,8	68,0	30,8	6	1 00500 00 1	0,409	1	1	08881	53	0	12

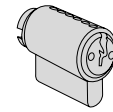
Dimensional drawings



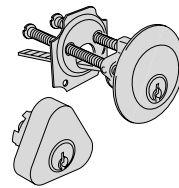
Other available model



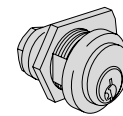
1.02152.00.0.12
1.02166.00.0.12
1.02169.00.0.12
1.02173.00.0.12



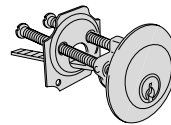
1.02651.01.0



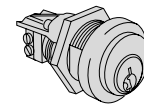
1.02162.00.0.12
1.02174.00.0.12



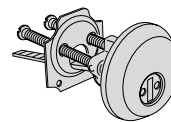
1.72270.26.0.12



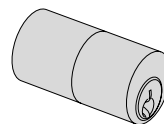
1.02501.00.0.12



1.72271.01.0.12
1.72271.03.0.12



1.02501.10.0.12



serie 02562